

R1390 拆喷头

Take out the print head

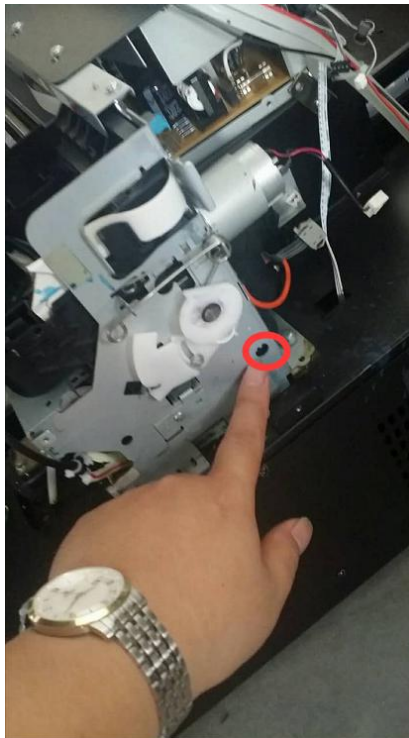
关机断电 Power off

按一下联机键，待字车停止移动，关掉后面的总电源，把电源线拔掉。

Press “Online button”, after the printer head stop moving, press the total power switch, remove the power line

打开机器红色上盖，用螺丝刀在如下图所示的地方旋转三圈，让字车解锁，然后将字车手动拉到中间。

Open the metal cover of the upper part of the printer; there is a small hole (as the show), use Slotted screwdriver to rotate three circles to relax the carriage, and then move the carriage at the middle position of the machine by hand.



拔掉墨囊，墨囊拔出来后在一边放好（注意不要将墨水溅到喷头上）

Take out the ink sac one by one (do not spill out the ink on the print head)

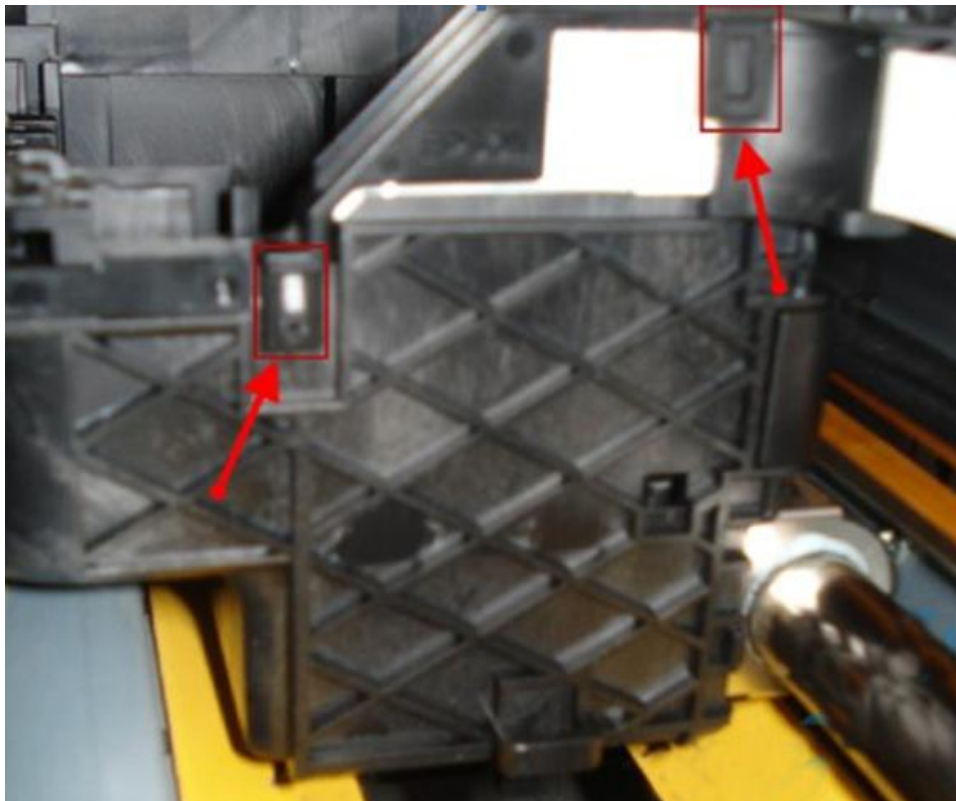
取出字车右侧的电缆夹

Take out the cable clamp on the right side of the carriage



松开如图所示的两个卡扣

Release the two buckles as the picture showed



松开如图所示的三颗螺丝

release the three screws on the picture



小心谨慎的取出喷头

Take out the printer head carefully.



直直的将喷头排线取出来，检查两根排线是否氧化，是否有脏东西(如果排线芯片有脏东西，用橡皮擦顺着扁平线往外擦)

Pull out the flat cable straightly, do not make damage of the touch spot of the lines.



喷头拆出来之后，喷头底部金属表面不能与任何东西接触

When the head is out, the metal surface at the bottom of the head can't contact with anything.



喷头安装

Insert the print head back to the carriage

插排线 Insert flat cable

确保两根排线没有插错位置

You must make sure the two flat cable did not insert wrong position

把喷头直直的放进字车

The printer insert back to the carriage straightlly



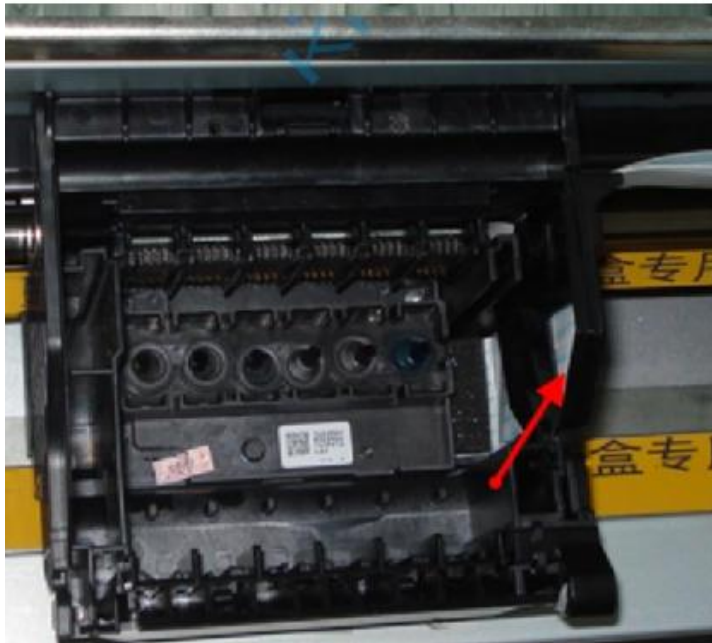
把三颗螺丝锁紧

Tighten the three screws as the picture shown



字车右侧的电缆夹卡回去

Insert back the cable clamp on the right side of the carriage



插芯片触点板

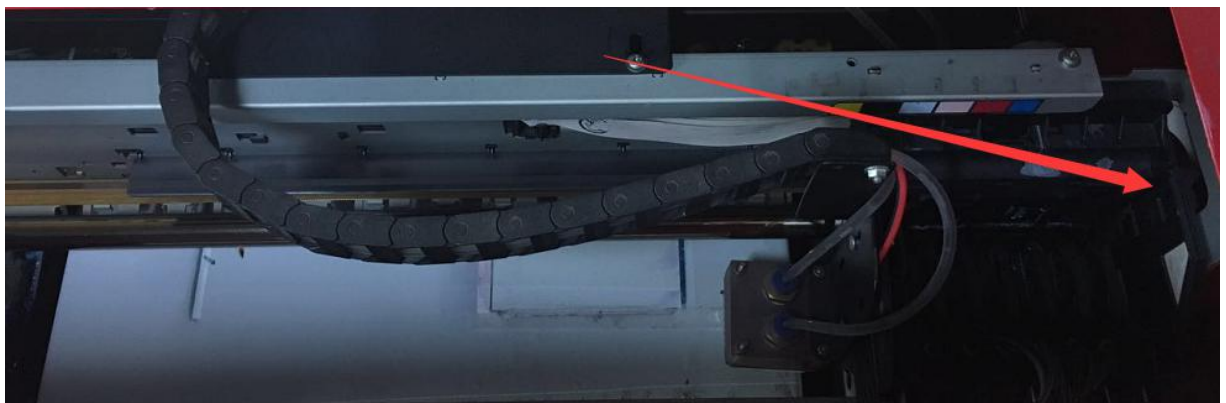
Insert the chip back to the carriage

插墨囊

Insert the ink sac back to the column

用手把字车拉到机器最右侧，让字车归位

Move the carriage back to the original position by hand (at the right side of the machine)



打印机开机

Restart your printer

抽废墨 -- 清洗 -- 打喷嘴检测

Suction ink from waste ink tube -- cleaning automatically by press ink reset button 7s

-- Print nozzle check